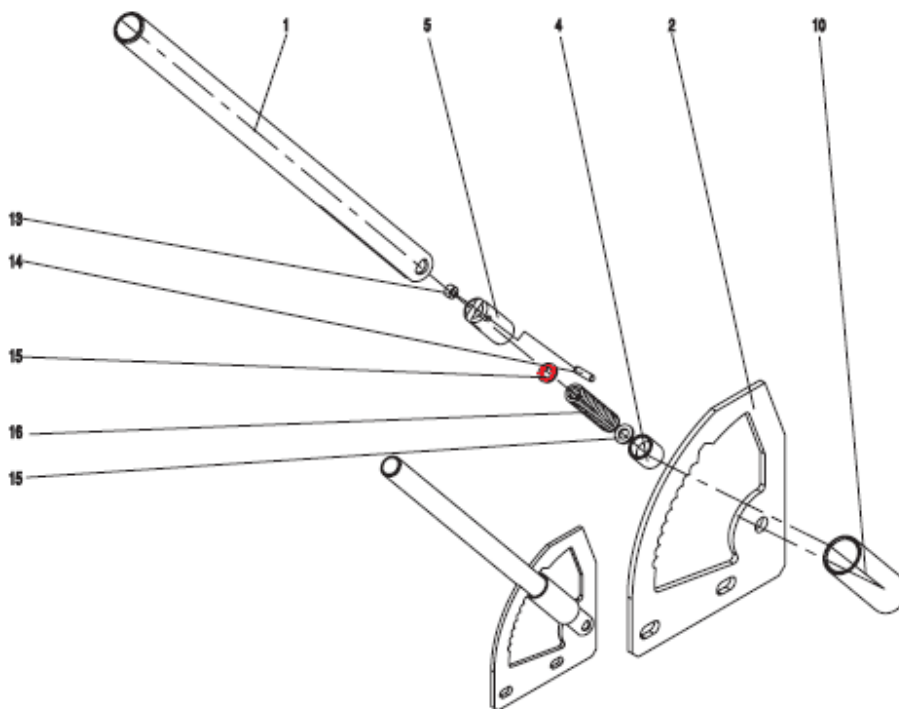




Gear Changing without Operator Action T-180

Automatic gear "up shifting" can occasionally occur when there is insufficient tension on the gear change ratchet spring.

The addition of one or more shims (2mm to 4mm of washers) above the spring in the handle mechanism should stop this occurring.



Careful removal of the complete assembly is required before dismantling to install the additional shims. As a spring is part of the mechanism care needs to be taken to avoid an "explosive" release of the spring and associated loss of parts that may have flown off to unknown points of the workshop.

NOTE: If there is too much tension (to many shims) it can make shifting very difficult so it may be that you have to remove a shim, re assemble and test, possibly making shim changes several times until you find the best level of ratchet tension. **Difficulty in shifting can also be from lack of lubrication on the whole gear shift mechanism. See MM no 17**